

BASES

umbrella base options



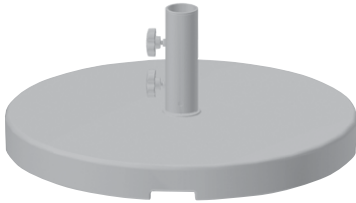
SHADE7
premium outdoor living



30kg Concrete Filled Base

This is our standard commercial and residential umbrella base for smaller umbrellas such as our Venice umbrella range. It features a uniquely designed plastic shell that is filled with concrete, and has a powder coated steel spigot pipe. Good for use in areas with moderate exposure to the wind.

Base size: 55cm dia. Post Size: 40mm



45kg Concrete Filled Base

This is our standard commercial and residential umbrella base for larger umbrellas. This base features a uniquely designed plastic shell that is filled with concrete, and has a powder coated steel spigot pipe. This base is suitable for smaller umbrellas with high exposure to the wind or larger umbrellas with low to medium exposure to the wind.

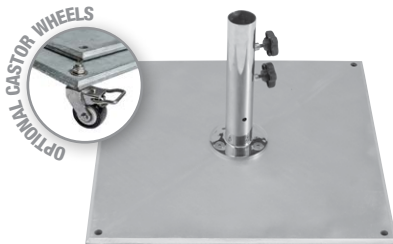
Base size: 65cm dia. Post Size: 50mm



34kg Commercial Steel Base with Wheels

This is a popular commercial umbrella base for midsize umbrellas in semi-sheltered locations. It also includes two wheels making the umbrella and base easy to move. The base is made with powder coated steel giving it a very thin profile, while being very strong. Not recommended for coastal environments as it will cause rust over time.

Base size: 60cm x 60cm. Post Size: 50mm



35kg Galvanised Steel Premium Base

This base is similar to the 34kg Commercial Steel base except that the steel plate is made with galvanised steel and the spigot is made with polished 304 stainless steel. This base is highly resistant to rust making it ideal for coastal environments. Suitable for smaller umbrellas with high exposure to the wind or larger umbrellas with low to medium exposure to the wind.

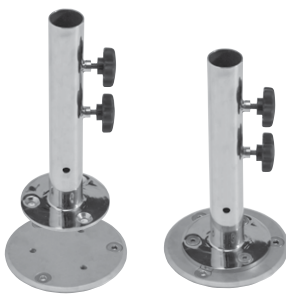
Base size: 60cm x 60cm. Post Size: 40mm or 50mm



45kg Galvanised Steel Premium Base

This base is manufactured with galvanised steel and the spigot is made with polished 304 stainless steel. This base is highly resistant to rust making it ideal for coastal environments. This base is suitable for larger umbrellas with medium exposure to the wind.

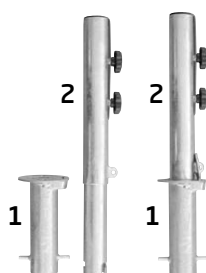
Base size: 70cm x 70cm. Post Size: 40mm or 50mm



Removable Spigot System

Ideal for any environment where you can bolt down to a concrete surface or wooden deck. Firstly the stainless steel base plate is fixed to the ground surface with bolts. The spigot can then be easily attached using the supplied spigot bolts, and then removed as required. The advantage of this system over a traditional base is that the spigot and base plate system cannot blow over in the wind and there is no heavy base to move around or to take up space. Multiple base plates can be installed to provide a number of umbrella fixing locations for the spigot. Ideal for larger umbrella sizes or windy locations.

Post Size: 40mm or 50mm



Removable In-ground Fitting

Great for all environments and enables an umbrella to be used without a base. The fitting is made up of two parts; **1:** A galvanised 'in-ground sleeve' which has a stainless steel spring loaded lid. This needs to be concreted into the ground. **2:** A removable 'adapter' which fits into the 'in-ground sleeve' and holds the umbrella securely. When the umbrella and removable adapter are removed, the lid will close producing a flush surface. No wasted space with bases and no heavy base to lift, the umbrellas cannot blow over and they look great. Ideal for windy locations.

Post Size: 40mm or 50mm