

VENICE

stylish, durable sun umbrella



SHADE7
premium outdoor living

THE VENICE SUN UMBRELLA IS THE PERFECT UMBRELLA FOR COMMERCIAL ENVIRONMENTS AND WINDY LOCATIONS.



What sets the Venice umbrella apart is the uniquely designed heavy duty 12mm fibreglass canopy arms. These fibreglass arms can bend and flex making the umbrella super durable and able to withstand wind and rough treatment. This sun umbrella also features strong resin and stainless steel parts and an easy to use rope and pulley system for opening and closing.

Our Venice Tilt umbrella has been specially fitted with a durable automatic tilt system, which allows you to tilt the canopy at a 60 degree angle. The winder does all the work for you, automatically tilting the umbrella into place and giving you flexible shade coverage to adjust for a low or high sun.



ADVANTAGES

- Lightweight and extremely durable fibreglass arms
- Strong 2.2mm thick aluminium post
- Venice - 5 year residential back-to-base frame warranty*
- Venice Tilt - 3 year residential back-to-base frame warranty*
- European made acrylic canvas fabric with 10 year warranty*
- Heavy duty resin and stainless steel parts
- Post can be split into two halves for easy storage/transport
- Easy to open and close with rope and pulley system
- Rust free aluminium and fibreglass frame



*3yr commercial back-to-base frame warranty



*No warranty for commercial use



*5yr commercial fabric warranty

FEATURES

The Venice and Venice Tilt umbrellas are cleverly designed and engineered to be durable, long lasting and easy to operate. The fibreglass arms are extremely sturdy and are able to withstand very high wind conditions. Strong anodised aluminium centre posts are designed to be split in the middle to reduce the length for storage. Another benefit of these umbrellas is that while they are one of the strongest outdoor umbrellas on the market, they are also one of the lightest umbrellas. This makes them easy to carry when moved or stored.

BUILT WITH STRENGTH, STYLE AND FUNCTIONALITY; THE VENICE TILT SUN UMBRELLA CAN BE TILTED TO IMPROVE SHADE COVERAGE AS THE SUN MOVES ACROSS THE SKY



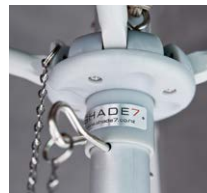
HEAVY DUTY
38MM DIAMETER
ALUMINIUM
SPLIT POLE



DURABLE
STAINLESS STEEL
PULLEYS & FIXINGS



SUPER STRONG
FIBREGLASS
ARMS & JOINTS



HIGH QUALITY
ROPE & PIN
OPENING SYSTEM



STRONG 60
DEGREE TILTING
MECHANISM



DURABLE
WINDER SYSTEM

VENICE TILT ONLY

INSTALLATION OPTIONS

You can either use your umbrella with a freestanding base or instead install it using our stainless steel Removable Spigot System. The base plate is bolted down to a timber deck or a concrete patio and the removable spigot is then fixed to the base plate.



30KG CONCRETE
FILLED BASE



30KG PREMIUM
WHEEL BASE



REMOVABLE
SPIGOT SYSTEM
For installation onto a wooden
deck or concrete patio.



COVER BAG
Highly recommended and
easy to use. Will double the
life of your umbrella fabric.



CANOPY FABRIC

EUROPEAN MADE, 100% SOLUTION-DYED, ACRYLIC CANVAS.

Our premium marine-grade fabric comes with a 10 year warranty and has the best available colour fastness rating of 7-8 out of 8*. It also has the highest possible rating of UPF 80, cutting out the maximum amount of harmful UV light for excellent sun protection.

*Colours with red colour pigmentation (red, orange, yellow etc) will have lower colour fastness than other colours and will show some fading earlier.

VENICE RANGE

VENICE TILT RANGE

Dimensions

¹Measured from point to point. All measurements are rounded and are subject to change
²Wind damage is not covered by the warranty.
³When used at horizontal setting.

Dimensions of open umbrella

| | 2.2m Square | 2.6m Octagonal | 3.1m Octagonal |
|-----------------------------------|-------------|-------------------|-------------------|
| a: Width of canopy (cm) | 220 x 220 | 1260 ^Ø | 1315 ^Ø |
| b: Height to top of umbrella (cm) | 270 | 270 | 270 |
| c: Canopy edge height (cm) | 200 | 195 | 200 |
| Canopy shade area (m2) | 4.8 | 4.8 | 7.0 |

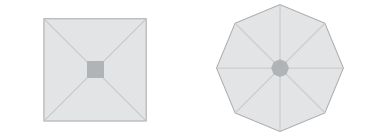
Dimensions of closed umbrella

| | 2.2m Square | 2.6m Octagonal | 3.1m Octagonal |
|---------------------------------|-------------|----------------|----------------|
| d: Closed ground clearance (cm) | 85 | 110 | 85 |

Wind rating guide

| | 2.2m Square | 2.6m Octagonal | 3.1m Octagonal |
|------------------------------------|-------------|----------------|----------------|
| Installed wind rating ² | 50kph | 80kph | 60kph |

VENICE TILT RANGE



| | 2.2m Square Tilt | 2.6m Octagonal Tilt |
|------------------------------------|------------------|---------------------|
| a: Width of canopy (cm) | 220 x 220 | 1260 ^Ø |
| b: Height to top of umbrella (cm) | 270 | 270 |
| c: Canopy edge height (cm) | 200 | 195 |
| Canopy shade area (m2) | 4.8 | 4.8 |
| d: Closed ground clearance (cm) | 85 | 110 |
| Installed wind rating ³ | 40kph | 40kph |

CANOPY COLOURS Please contact us to check colour availability. (Fabric colours may vary slightly from printed swatches shown)

STANDARD ACRYLIC COLOURS

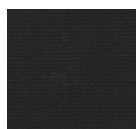


CHARCOAL R770

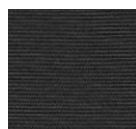


ECRU R117

NON-STANDARD ACRYLIC COLOURS



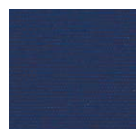
BLACK R103



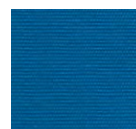
DARK GREY R164



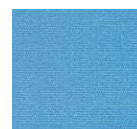
CAPTAIN NAVY R175



NAVY BLUE R170



ROYAL BLUE R172



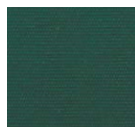
LIGHT BLUE R193



TURQUOISE R171



PISTACHIO R160



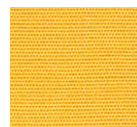
FOREST GREEN R102



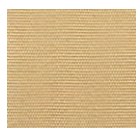
RED R176



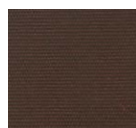
ORANGE R567



YELLOW R554



BEIGE R100



BROWN R156



TAUPE R127



CADET GREY R138



LINEN R126



WHITE R099

STRIPE ACRYLIC COLOURS



BLUE/WHITE R16



TURQUOISE/WHITE R11



RED/WHITE R12



YELLOW/WHITE R55



BLACK/WHITE R17